



Wellis®
EUROPE'S LEADING SPA MANUFACTURER

THE WORLD'S GREENEST SPAS



Life

2023

ABOUT US

Since our company's beginnings in 2003, the Wellis brand has steadily extended its reach throughout the world. The increasing demand for a healthy lifestyle has boosted the desire for quality wellness products. Thanks to continuous development and growth, Wellis has now become the largest hot tub manufacturer in the European market and already has a significant share in the American market. We produce hot tubs, swim spas, hot tub covers, and hot tub cabinets in a 320,000 sq. ft. state-of-the-art factory. The initial construction and continuous expansion of our manufacturing facility equipped with modern production tools was motivated by the ever growing market demand and our pursuit of quality manufacturing technology. We currently sell 30,000 Wellis hot tubs per year at more than 1000 points of sale worldwide. We have been developing our new product line for more than three years.

Our new models are the culmination of countless licenses, thousands of work hours, and ongoing innovation. To stay true to our mission, we aim to create products that are both user-friendly and eco-conscious. It is increasingly important to us to pay close attention to the needs of our customers while also protecting the earth.

The primary goal of our company is to provide a better wellness experience for our customers, while also lessening energy consumption as much as possible. In these new models, buyers will see significant technological advancements as well as a renewed design.



“I was an active teenager; I traveled the world and was continuously on the hunt for new business opportunities. First, I worked on importing jeans from Asia, but I always wanted to learn and expand. Ultimately, my real success in business came when my brother and I started selling spas and together we created Wellis, Europe's leading hot tub company. In the beginning, we imported spas and hydromassage tubs as ready-made, pre-assembled products. The year 2010 became a gigantic milestone for Wellis and for us, as it was when we started manufacturing spas. We started building the factory in the spring of 2008, and a few months later, the global financial crisis broke out. And then the great economic recession started. Everyone tried to talk me out of starting to manufacture hydromassage hot tubs in the

middle of the crisis, as they absolutely count as luxury items. The opposition included the company's management. They also didn't endorse starting manufacturing, but I decided to go for it. To put it delicately, neither starting to make the products, nor introducing our own hot tubs to the European market was easy. Fortunately, our gamble worked out and the rest is history. Our efforts were rewarded with much success and manufacturing products ended up pulling the company out of the crisis. As our next great leap, I suggested we try to expand into the American market — the native land of hot tubs. We have been growing our roots here and have been working to introduce the brand named Wellis to America. Parallel to expanding our business in the US, we would like to continue to grow overall. It is our passion to be on the cutting edge, but it's also an enormous responsibility!”

Zsolt Czafik CEO and Akos Czafik CEO
of Wellis Hungary

GREEN ENERGY SUSTAINABLE PRODUCTION TECHNOLOGY



Instead of being merely a long-term vision, a sustainable economy has become part of everyday life at Wellis. In the last few years, our company has placed increasing emphasis on the elements of an environmentally friendly and sustainable model.

Our efforts are based on two essential pillars:
The first is to optimize our production process and the second is to educate our customers about energy and water-saving aspects, giving special consideration to environmental factors.

Here are some processes which were introduced into the daily life of our company:

- Recycling unnecessary substances with a special shredder.
- Producing ABS (Acrylonitrile butadiene styrene) from recycled plastic.
- Using low-consumption pumps in spas.
- Various developments in the name of renewable energy, like integrating solar systems into our processes.
- Shortening transport routes around the world and coordinating production and sales activities.
- New energy-efficient hot tub models.



SAVE THE RAIN FOREST

We keep environmental awareness at the forefront of our minds during manufacturing. For instance, we eliminated the use of wood during production and replaced it with recycled materials.

As such, we are protecting nature and staying mindful of the most effective recycling practices. At the same time, Wellis is also staying on top of technological innovations.



ENVIRONMENTAL AWARENESS



QUALITY ASSURANCE

Wellis quality is continuously benchmarked against the highest German production standards under the TÜV Certification protocol that we subscribe to. This ensures we constantly meet and exceed all relevant international standards.

We are proud of this commitment to excellence and the clear differentiation from our market competitors that it affords us.

Our TÜV certificate guarantees that our products are of excellent quality and are regularly and independently monitored to meet and exceed the highest manufacturing standards. The CE label on all of our products assures our customers that the design and build meet or exceed all relevant EU standards.

PRODUCT WARRANTY: PEAKLIFE & SWIMLINE SERIES:

10

years on the shell structure of the spa

5

years on the cabinet of the spa

5

years on the control box and the display module

5

years no leak plumbing warranty

CITYLIFE:

10

years on the shell structure of the spa

3

years on the cabinet of the spa

3

years on the control box and the display module

3

years no leak plumbing warranty

THE RESULT OF 3 YEARS OF DEVELOPMENT

The Wellis R&D team has been working for 3 years on the new product portfolio, which is poised to revolutionize the hot tub industry.

61 patents are already registered in Europe and 14 in the US. Wellis also has a world patent for our electric water diverter. Our many technology breakthroughs have resulted in energy-efficient and environment-friendly solutions.



SAVING ENERGY

Our goal is to find energy efficient solutions while also focusing on sustainability and environmentally conscious production technologies. It became obvious that our new and renewed products would also be produced by these standards.

This is the reason our new line was named Life. The name will be displayed by both our product families: PeakLife and CityLife.

ENERGY EFFICIENCY



WATER TREATMENT



DESIGN, APPEARANCE



FOCUS ON ENERGY EFFICIENCY

Wellis
ATLAS **Life**
with
SMART-in Step system

2.9 kWh / day
\$ 404 / year*

Bullfrog
A7LC

Full foam (CEC)

3.96 kWh / day
\$ 551 / year*

Hot Spring
Envoy

Full foam (CEC)

4.45 kWh / day
\$ 620 / year*

Jacuzzi
J-475

(CEC)

5.47 kWh / day
\$ 762 / year*

Chinese
spa

(CEC)

10.00 kWh / day
\$ 1394 / year*

*Sources: CEC - California Energy Commission; Wellis - Based on Wellis measurements with Smart-In Step System.
CEC data: water 102°F, air 63°F, filtering 1x2 hour. 1 kW = 0.35 cents average calculated.

ELECTRONIC WATER DIVERTER

WOW SYSTEM

Our improved electric water diverter replaces the large manual diverter. Our new device performs the same function and comes with a small control panel for ease of use.

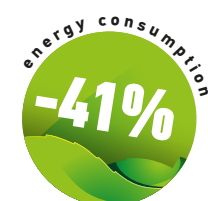
The electric water diverter makes for a gentler massage experience because after activation, the speed of the water increases gradually. Through automation, we've built a new massage experience into the hot tub.

The gradual changing direction of the massage every five seconds, creates a pulsing effect, providing an even more invigorating feel than a traditional massage.

For the water current, we combined the massage strength of two older-model massage pumps in one by straightening the pipes and installing the new water diverter. In this way, the consumption of energy

while in use has been reduced to half the previous amount. Wellis' energy-efficient water diverter is patent registered in 152 countries.

Compared to our competitor's solution, it has 23% higher pressure with approximately 30% less energy consumption.



Moreover, we compared it to our previous models, and the results were that it has 75% higher pressure with approximately 41% less energy consumption

EVEREST with old water diverter
To reach 12 PSI massage feeling needed:

2x3HP + 2x2HP pumps and 7400 W

EVEREST Life with new diverter
To reach 12 PSI massage feeling needed:

2x3HP pumps and 4400 W



New Life Line Video



SMARTPHONE APPLICATION

Control your spa from home or while you are on the road with the Wellis Smartphone™ app!

The app is available for both iPhone and Android smartphones.

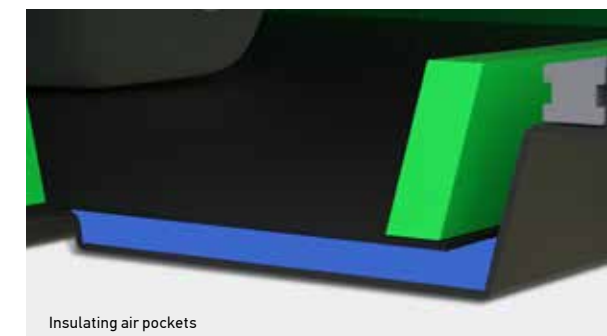
Set the desired temperature and other functions from your phone before you head home so that, by the time you arrive, you have a heated, welcoming spa waiting for you. Your luxurious Wellis hydromassage is now available at the touch of a button.

NEW SCANDINAVIAN INSULATION

All of our new spas incorporate an innovative Scandinavian insulation. In addition, 1.4" of POLYFOAM boards have been installed into the spa's framework, rather than fastening them to the cabinet. The POLYFOAM is fit specifically for each model and can be easily removed and reinstalled with ease.

The foam insulation under the rim has also been exchanged for an aesthetically pleasing 1.4" of POLYFOAM insulation.

In the ABS bottom pan, we have replaced the polyfoam with the best insulator we could find — Air. We achieved this by installing an ABS sheet 1.2" from the bottom plate, creating insulating pockets of air.



SMART-IN STEP SYSTEM

In Wellis spas, the heat pump can be stowed under the larger step. In doing so, the heat is maintained in a cost-efficient manner, without affecting the product's aesthetics.

The Smart-In Step with built-in heat pump can heat or cool from 59°F up to 104°F, (saving up to 70-75% of heating energy). Inside the steps we also designed storage compartments.

These handy areas are perfect for storing towels or chemicals, and there is also a compartment for charging cell phones (equipped with a USB hub).





WATER PURITY

All Wellis spas use a multi-stage filtration and sanitation system that ensures crystal clear, safe bathing water with minimum user input. The process starts with our special antimicrobial cartridge filters. The low-energy eco-circulation pump draws spa water through the filters where any tiny particles are then trapped. The antimicrobial coating then helps to eliminate any bacteria that may be attached to the filtered particles. This helps prevent any odors and bacteria growth from developing.

Once the spa water has been filtered, it passes through the heater and then the eco-circulation pump. Next, it is passed through the sanitation device.

Although hot tub water can be kept safe with chemicals alone, an electronic sanitation device greatly reduces the amount of chemicals required, thereby improving the water quality for soakers. Every spa we make is fitted with the highly-efficient OZMIX™ water purification system.

CRYSTAL CLEAN SYSTEM

Thanks to the 2" diameter pipe, our motor circulates more water and does so faster, thus, filtering the water more rapidly.

The new circulation jet has been designed to have 3 zones.

Two of these zones direct the water downwards to stir up heavier debris that has settled in the footwell of the hot tub.

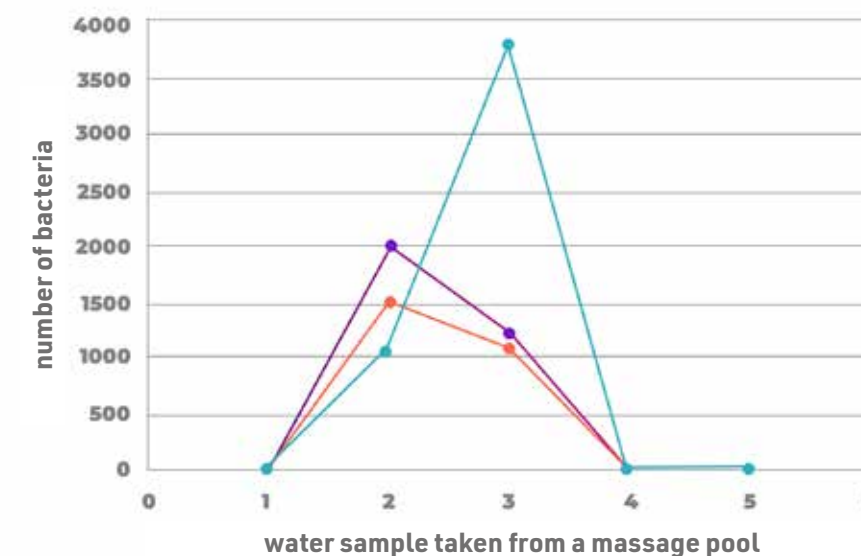
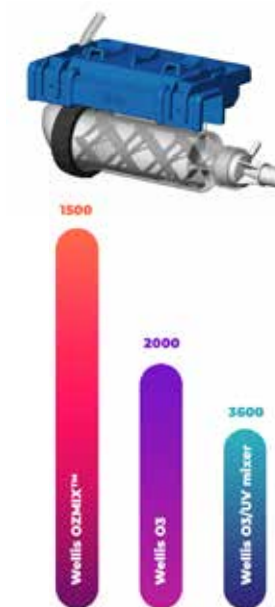
The third zone helps direct the flow toward the filtration system.



OZMIX™ SYSTEM

Disinfection efficiency can be increased by mixing ozone in the water. Tests have shown that the ozone systems we are using are the most efficient form of disinfection. To facilitate this process, we created the OZMIX™ system. This system has proven to be more effective than comparable disinfection systems with the addition of chlorine and a balanced pH.

Our goal is to achieve the best possible disinfection system while reducing the amount of chemicals that are currently needed for the safe use of a spa.



IN-LINE WIS

- This useful, built-in accessory provides 24-hour monitoring of your spa water's quality status via your smartphone.
- The system also outlines the exact chemicals and dosages needed to maintain proper water balance.
- Since this is a built-in system, there is nothing to float around in your hot tub or need to be replaced. This feature has been specially developed by our Wellis team.
- You can download the WIS application from Google Play or the App Store.



App Store



Google Play





SOUND SYSTEM

AQUASOUL™ PRO 4.1 AND 2.1 SOUND SYSTEM (PEAKLIFE OPTION)

The Wellis AquaSoul™ Pro sound system features the newly developed, top-quality waterproof elements. You no longer need to bother with MP3 players, or any other cable-connected devices because the built-in receiver is true Bluetooth so its even connectable via your mobile phone.

4-channel amplifier with a Bluetooth receiver, Subwoofer (288 W), in 4.1 system 4 pcs concealed 30 W each, or 2.1 system 2 built-in speakers - 30 W each are part of the AquaSoul™.

MYMUSIC™ 2.0 SOUND SYSTEM (CITYLIFE OPTION)

The watertight elements installed for the myMusic™ sound system are of the latest design and highest quality. There will be no more trouble with Mp3 players, or other external units, since you can connect to the built-in receiver unit from your mobile phone via Bluetooth



PeakLife concealed speakers



PeakLife edge speakers



CityLife edge speakers

FUTURE OF DESIGN

COLOR THERAPY (MOOD LIGHTING)

Our chromotherapy system is based on lights of four different colors: red, green and blue. These can be set to fade gently through the spectrum or, by a simple touch of the spa's control panel can be fixed on the single colour most beneficial to your mood.

LIGHTSIDE™ SPA CABINET

The wood grain-look finish of the cabinet and wide horizontal side and corner bars add an intimate atmosphere to the appearance of the Wellis lineup of spas. Cabinets are available in both gray and brown. Our new spa cabinet is sleek and aesthetically pleasing.

An eye-catching LED strip runs along the side of the spa cabinet (PeakLife). Newly developed corner elements give a more modern and refined look to our new design.





Ultra soft pillows

NECK MASSAGE & HEADREST

The neck massage and headrest take your daily stress off your shoulders and neck with their advanced ergonomics and more comfortable design. The design of the headrest follows the line of the neck and head, creating a cradle so you can relax even more comfortably in our hot tubs.

WATERFALL

Sit under the cascading water and enjoy a soothing neck and shoulder massage. This blissful water feature is a new development for Wellis. There is no other product on the market like it.



Waterfall



PeakLife filter housing

FILTER HOUSING

Our custom-made filter housing has an outstanding design and complements the overall aesthetic of the hot tub. Filters can be replaced easily in one easy step.

∞ 7" ROTATING INFINITY JET

We specially designed the 7" rotating infinity jet. This jet makes the experience even more enjoyable by massaging a larger portion of the body. Rather than just moving up and down, it draws a figure eight as it rotates.



Infinity Jet



Wellis' 2023. LIFE SPAS

EXCLUSIVE LIGHTS - COLOR THERAPY

Wellis-Centric Lighting (WCL) is based on the belief that colors and colored lights can have a positive impact on a person's physical and mental health. Various scientific studies have shown a relationship between the human body and specific colors.

Green - Calming
Blue - Relaxing
White - Productivity
Yellow - Energy

Red - Stimulating
Orange - Positivity
Pink - Healing
Indigo - Peaceful

COLOR THERAPY MOOD-LIGHTING

When connected to our SmartTouch control systems, in.mix transforms our touch screen into a real lighting console with a perfectly designed interface. Create your personalized ambiance easily with an infinite selection of colors.

The spa can control in parallel three zones with the selected color. in or around your spa (inner, edge, cabinet). It can illuminate the water of your spa or create accent colors around it.



EVENLIGHT JETS

At Wellis, we came up with countless patents for our new models, one of which was for lighting jets. The jets illuminate not just themselves, but also the surface around them.

The interior of the spa is sleek and modern in its appearance and is like sitting in a spaceship. There is nothing else like this on the hot tub market. The lighting jets not only give the spa a more modern appearance, but also a larger lighting surface.

EDGE LIGHTING

The Edge lighting element is located under the accents, the cup holder, water features, and the filter housing. You can control them all at the same time. This lighting illuminates in harmony with the jets and exterior lighting.

LIGHTSIDE™ CABINET SYSTEM (PEAKLIFE)

The LightSide™ cabinet system appears in Wellis' new spas, which includes hidden lighting under the corner elements, and an in-house developed LED strip, which runs along the side cabinet of the hot tub. The integrated LED strip gives a special atmosphere while relaxing.

WELL LIGHTING

Citylife hot tub models include waterline exclusive spot RGB LED lighting, which lights the water of the entire spa.





COLORS OF WELLIS



Tuscan sun



Midnight canyon



Sterling silver

RELAX MASSAGE SEAT

This seat targets the regeneration of the shoulder girdle and the longitudinal trunk muscle tissues, as well as the hip flexor muscles and the knee extensor muscles — the muscle groups most exposed to everyday strain.

EXPERT MASSAGE SEAT

This seat’s adjustable jets offer physiological effects, with customized directional and strength control.

COOL DOWN MASSAGE SEAT

The armchair design provides relaxation after training. In addition to the physiological recovery offered, its overall calming effects are also significant.

FOCUS MASSAGE SEAT

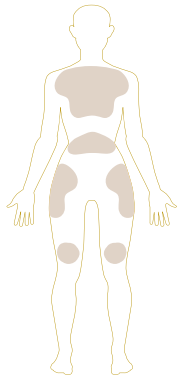
This seat offers its user an experience similar to the “Expert” effect, relaxing the longitudinal trunk muscle tissues, and passively activating the hip and thigh flexor and extensor muscle groups.

BODY FLOW MASSAGE SEAT

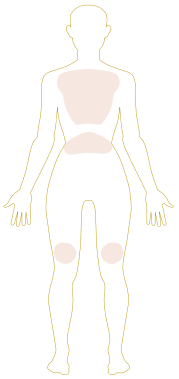
This is the massage seat with the most intensive physiological effect. In addition to affecting the trunk’s muscle tissue, it also positively impacts venous and lymphatic circulation in the lower limbs, bringing relief to vein valves.

INTENSO MASSAGE SEAT

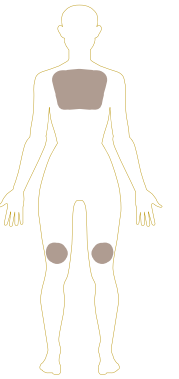
This is the most refreshing massage seat and is a favorite of professional athletes. Intenso is ideal for recovery after an intense training session, working the most critical areas, the back and leg muscles.



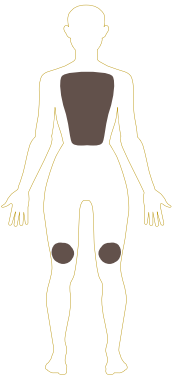
Relax massage



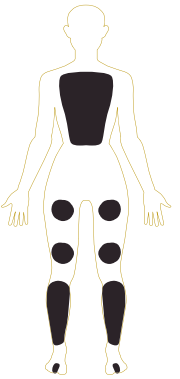
Expert massage



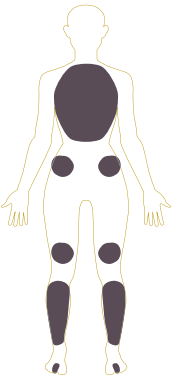
Cool down massage



Focus massage



Body flow massage



Intenso massage

* The layout of the jets varies by model.

ACRYLIC COLORS

With our comprehensive range of beautiful contemporary acrylic shades, there is something to harmonize with any setting — indoor or out.

- Choose from:
- Sterling Silver
 - Tuscan Sun
 - Midnight Canyon

CABINET COLORS

No more sanding, oiling, and messy maintenance of a traditional timber cabinet. Our spa cabinets are made of a UV-resistant polymer material that looks as good as real wood, but is entirely maintenance free. PeakLife spas have the new

LightSide™ design cabinet paired with vertical corner elements, lending an elegance touch to the aesthetics. Cabinets are available in gray and brown.





SMARTTOUCH CONTROL PANEL

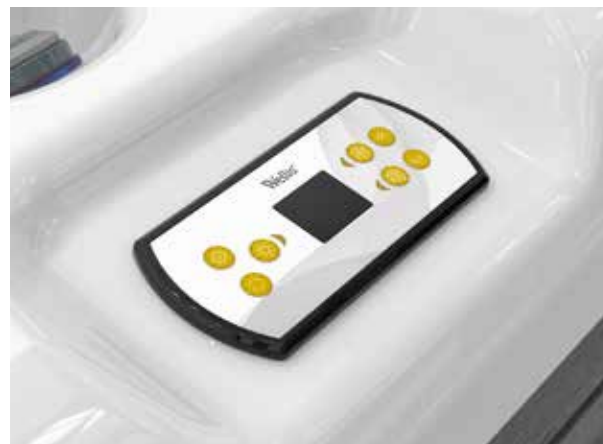
CONTROL PANELS

SMARTTOUCH CONTROL PANEL (PEAKLIFE)

The control panel offers a full-featured keypad with color capacitive touchscreen display. Eliminating the need for physical buttons, keys, and overlays, our touchscreen keypad is fun to use, simple to operate, and features an intuitive and engaging one-level menu interface.

EASY7 CONTROL PANEL (CITYLIFE)

The Wellis Easy 7 brings all the features you really need to one keypad. Compact, with a large LCD display, the screen is bright enough to be seen throughout the day and simple enough to use in the middle of the night.



EASY7 CONTROL PANEL

EASY4 CONTROL PANEL (MILANO P&P, OSLO P&P)

A newly developed high quality and compact control system, designed to easily control the filtering, heating and bathing experience.



EASY4 CONTROL PANEL

AUXILIARY CONTROL PANELS (PEAKLIFE) 1 or 2 PIECES

The single button is also an auxiliary keypad, designed to be installed as a second keypad on your spa. This feature allows you to activate the spa pump associated with its respective section.





energy consumption
2.9
kWh / day*

↑ Premium edition with sound system

Everest **Life**

93 × 93 × 37 in
2 reclining seats, 3 upright seats

Acrylic

Sterling silver

Tuscan sun

Midnight canyon

Side cover

brown

grey



New 24" lighted waterfall

Premium Edition	
Net weight / Water volume	996 lbs / 365 gallons
Frame	Wellis PolyStyrol (WPS)
Cabinet	LightSide™ UV-proof wood textured
Reinforcement	Poli-MAX™
Scandinavian insulation	Polyfoam 1.4 in
Total number of jets	68
∞ Infinity jets	6
Min / Opt. power requirement	22A / 35A - 240V/60Hz
Pumps	2 × 3 HP single speed
Circulation pump	W-EC pump (0.25 kW)
W.O.W. system	electronic water diverter
Heater	4 kW
Control panel	SmartTouch
Auxiliary control panel	2 × 1 buttons
Water sanitization	Ozmix™ system (Ozone + mixer)
Cartridge filter	3 × MicroPlus antibacterial
Flat fountain jets	2 Lighted Fountain Jets
Waterfall	24" Lighted Waterfall
Light-zone system	EvenLight Jets, Edge Lighting, Cabinet & Corner Lighting
Remote spa control	SmartPhone app with wifi connection
W.I.S. Inline system	built-in intelligent water analyzer
Thermo cover	standard - 4.7 to 3.5 in

Options	
3 kW heat pump	
Smart-In step prepared to house heat pump	
AquaSoul™ Pro 4.1 with concealed speakers	

* California Energy Commission data: water 102 °F, air 63 °F, filtering 1×2 hour. Based on TÜV measurements with heat pump.
** If the minimum current is connected, the massage motor(s) and the heating unit cannot be operated at the same time.



energy consumption
2.9
kWh / day*

↑ Premium edition with sound system

Kilimanjaro **Life**

93 × 93 × 37 in
1 reclining seat, 5 upright seats

Acrylic

Sterling silver

Tuscan sun

Midnight canyon

Side cover

brown

grey



Infinity foot massage

Premium Edition	
Net weight / Water volume	1001 lbs / 383 gallons
Frame	Wellis PolyStyrol (WPS)
Cabinet	LightSide™ UV-proof wood textured
Reinforcement	Poli-MAX™
Scandinavian insulation	Polyfoam 1.4 in
Total number of jets	59 jets
∞ Infinity jets	6
Min / Opt. power requirement	22A / 35A - 240V/60Hz
Pumps	2 × 3 HP single speed
Circulation pump	W-EC pump (0.25 kW)
W.O.W. system	electronic water diverter
Heater	4 kW
Control panel	SmartTouch
Auxiliary control panel	1 button
Water sanitization	Ozmix™ system (Ozone + mixer)
Cartridge filter	3 × MicroPlus antibacterial
Flat fountain jets	2 Lighted Fountain Jets
Waterfall	24" Lighted Waterfall
Light-zone system	EvenLight Jets, Edge Lighting, Cabinet & Corner Lighting
Remote spa control	SmartPhone app with wifi connection
W.I.S. Inline system	built-in intelligent water analyzer
Thermo cover	standard - 4.7 to 3.5 in

Options	
3 kW heat pump	
Smart-In step prepared to house heat pump	
AquaSoul™ Pro 4.1 with concealed speakers	

* California Energy Commission data: water 102 °F, air 63 °F, filtering 1×2 hour. Based on TÜV measurements with heat pump.
** If the minimum current is connected, the massage motor(s) and the heating unit cannot be operated at the same time.



energy consumption
2.9
kWh / day*

↑ Premium edition with sound system

Elbrus Life

93 × 93 × 37 in
7 upright seats

Acrylic



Sterling silver Tuscan sun Midnight canyon

Side cover



brown grey



WellDome foot massage system

Premium Edition

Net weight / Water volume	996 lbs / 396 gallons
Frame	Wellis PolyStyrol (WPS)
Cabinet	LightSide™ UV-proof wood textured
Reinforcement	Poli-MAX™
Scandinavian insulation	Polyfoam 1.4 in
Total number of jets	61 jets
∞ Infinity jets	4
Min / Opt. power requirement	22A / 35A - 240V/60Hz
Pumps	2× 3 HP single speed
Circulation pump	W-EC pump (0.25 kW)
W.O.W. system	electronic water diverter
Heater	4 kW
Control panel	SmartTouch
Auxiliary control panel	2 × 1 buttons
Water sanitization	Ozmix™ system (Ozone + mixer)
Cartridge filter	3 × MicroPlus antibacterial
Flat fountain jets	2 Lighted Fountain Jets
Waterfall	Lighted Waterfall
Light-zone system	EvenLight Jets, Edge Lighting, Cabinet & Corner Lighting
Remote spa control	SmartPhone app with wifi connection
W.I.S. Inline system	built-in intelligent water analyzer
Thermo cover	standard - 4.7 to 3.5 in

Options

3 kW heat pump
Smart-In step prepared to house heat pump
AquaSoul™ Pro 4.1 with concealed speakers

* California Energy Commission data: water 102 °F, air 63 °F, filtering 1×2 hour. Based on TÜV measurements with heat pump.
** If the minimum current is connected, the massage motor(s) and the heating unit cannot be operated at the same time.



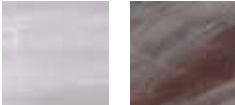
energy consumption
2.7
kWh / day*

↑ Premium edition with sound system

Teide Life

63 × 85 × 34 in
1 reclining place, 2 upright places

Acrylic



Sterling silver Tuscan sun

Side cover



brown grey



Ultra soft pillows

Premium Edition

Net weight / Water volume	686 lbs / 198 gallons
Frame	Wellis PolyStyrol (WPS)
Cabinet	LightSide™ UV-proof wood textured
Reinforcement	Poli-MAX™
Scandinavian insulation	Polyfoam 1.4 in
Total number of jets	32
∞ Infinity jets	2
Min / Opt. power requirement	16A / 25A - 240V/60Hz
Pumps	1 × 3 HP single speed
Circulation pump	W-EC pump (0.25 kW)
Heater	4 kW
Control panel	SmartTouch
Auxiliary control panel	–
Water sanitization	Ozmix™ system (Ozone + mixer)
Cartridge filter	2 × MicroPlus antibacterial
Flat fountain jets	2 Lighted Fountain Jets
Waterfall	–
Light-zone system	EvenLight Jets, Edge Lighting, Cabinet & Corner Lighting
Remote spa control	SmartPhone app with wifi connection
W.I.S. Inline system	built-in intelligent water analyzer
Thermo cover	standard - 4.7 to 3.5 in

Options

3 kW heat pump
Smart-In step prepared to house heat pump
AquaSoul™ Pro 2.1 with edge speakers

* California Energy Commission data: water 102 °F, air 63 °F, filtering 1×2 hour. Based on TÜV measurements with heat pump.
** If the minimum current is connected, the massage motor(s) and the heating unit cannot be operated at the same time.



energy consumption
2.8
kWh / day*

Atlas Life

85 × 85 × 34 in
1 reclining seat, 5 upright seats

Acrylic



Side cover



High performance lounge with infinity jets

Premium Edition

Net weight / Water volume	862 lbs / 297 gallons
Frame	Wellis PolyStyrol (WPS)
Cabinet	LightSide™ UV-proof wood textured
Reinforcement	Poli-MAX™
Scandinavian insulation	Polyfoam 1.4 in
Total number of jets	43
∞ Infinity jets	4
Min / Opt. power requirement	22A / 35A - 240V/60Hz
Pumps	2 × 3 HP single speed
Circulation pump	W-EC pump (0.25 kW)
W.O.W. system	electronic water diverter
Heater	4 kW
Control panel	SmartTouch
Auxiliary control panel	–
Water sanitization	Ozmix™ system (Ozone + mixer)
Cartridge filter	2 × MicroPlus antibacterial
Flat fountain jets	–
Waterfall	24" Lighted Waterfall
Light-zone system	EvenLight Jets, Edge Lighting, Cabinet & Corner Lighting
Remote spa control	SmartPhone app with wifi connection
W.I.S. Inline system	built-in intelligent water analyzer
Thermo cover	standard - 4.7 to 3.5 in

Options

3 kW heat pump
Smart-In step prepared to house heat pump
AquaSoul™ Pro 2.1 with edge speakers

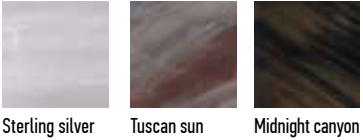


energy consumption
2.8
kWh / day*

Mandala Life

85 × 85 × 34 in
7 upright seats

Acrylic



Side cover



2 lighted waterfalls

Premium Edition

Net weight / Water volume	855 lbs / 297 gallons
Frame	Wellis PolyStyrol (WPS)
Cabinet	LightSide™ UV-proof wood textured
Reinforcement	Poli-MAX™
Scandinavian insulation	Polyfoam 1.4 in
Total number of jets	46 jets
∞ Infinity jets	2
Min / Opt. power requirement	22A / 35A - 240V/60Hz
Pumps	2 × 3 HP single speed
Circulation pump	W-EC pump (0.25 kW)
W.O.W. system	electronic water diverter
Heater	4 kW
Control panel	SmartTouch
Auxiliary control panel	–
Water sanitization	Ozmix™ system (Ozone + mixer)
Cartridge filter	2 × MicroPlus antibacterial
Flat fountain jets	–
Waterfall	2 Lighted Waterfalls
Light-zone system	EvenLight Jets, Edge Lighting, Cabinet & Corner Lighting
Remote spa control	SmartPhone app with wifi connection
W.I.S. Inline system	built-in intelligent water analyzer
Thermo cover	standard - 4.7 to 3.5 in

Options

3 kW heat pump
Smart-In step prepared to house heat pump
AquaSoul™ Pro 2.1 with edge speakers

* California Energy Commission data: water 102 °F, air 63 °F, filtering 1×2 hour. Based on TÜV measurements with heat pump.
** If the minimum current is connected, the massage motor(s) and the heating unit cannot be operated at the same time.

* California Energy Commission data: water 102 °F, air 63 °F, filtering 1×2 hour. Based on TÜV measurements with heat pump.
** If the minimum current is connected, the massage motor(s) and the heating unit cannot be operated at the same time.



energy consumption
6.4
kWh / day*

Olympus **Life**

11'7" x 7'6" x 3'25"
2 reclining seats, 7 upright seats

Acrylic



Sterling silver

Side cover



brown



grey



Body flow and Intenso reclining seat

Net weight / Water volume	1 984 lbs / 616 gallons
Frame	Stainless steel
Cabinet	HorizontSide™ UV-proof wood textured
Reinforcement	Fiberglass reinforced
Total number of jets	88
Min. / Opt. power requirement	32A / 60A - 240V/60Hz
Pumps	1 × 3 HP, double speed 2 × 2 HP single speed 1 × 3 HP, single speed
Circulation pump	1 × 1.25 HP (1,1 kW)
Heater	4 kW
Control panel	SmartTouch
Auxiliary control panel	1 × 1 button + 1 × 4 buttons
Water sanitization	Ozmix™ System
Cartridge filter	3 × MicroPlus
Laminar fountain jets	2 Lighted Fountain Jets
Waterfall	Lighted Waterfall
Led lights	Well and Edge Lighting + Evenlight jets
Sound system	Aquasoul™ Pro 4.1 with edge speakers
Aromatic therapy	Liquid Aroma (without fragrance)
Remote spa control	SmartPhone app with wifi connection
Scandinavian Insulation	standard
Heat exchanger preparation	standard

Options

- 3 kW heat pump
- Smart-In step prepared to house heat pump

* California Energy Commission data: water 102 °F, air 63 °F, filtering 1x2 hour. Based on TÜV measurements with heat pump.
** If the minimum current is connected, the massage motor(s) and the heating unit cannot be operated at the same time.



energy consumption
2.8
kWh / day*

Lima **Life**

86 × 86 × 35 in
7 upright seats

Acrylic



Side cover



Neck massage

Deluxe Scandi Edition	
Net weight / Water volume	739 lbs / 343 gallons
Frame	Wellis PolyStyrol (WPS)
Cabinet	HorizontSide™ UV-proof wood textured
Reinforcement	Poli-MAX™
Scandinavian insulation	Polyfoam 1.4 in
Total number of jets	40 jets
Min / Opt. power requirement	22A / 35A - 240V/60Hz
Pumps	2 × 3 HP - single speed
Circulation pump	W-EC Pump (0.25 kW)
W.O.W. system	–
Heater	4 kW
Control panel	Easy7
Auxiliary control panel	–
Water sanitization	Ozmix™ system (Ozone + mixer)
Cartridge filter	1 × MicroPlus antibacterial
Flat fountain jets	2 Lighted Fountain Jets
Waterfall	Lighted Waterfall
Light system	Well, Edge, and Corner Lighting
Thermo cover	standard - 4.7 to 3.5 in

Options
3 kW heat pump
Smart-In step prepared to house heat pump
MyMusic™ 2.0 with edge speakers

Plug & Play Option
SmartPhone app with wifi connection

* California Energy Commission data: water 102 °F, air 63 °F, filtering 1×2 hour. Based on TÜV measurements with heat pump.
** If the minimum current is connected, the massage motor(s) and the heating unit cannot be operated at the same time.

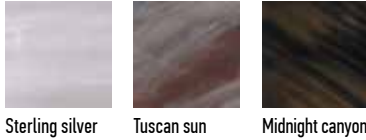


energy consumption
2.8
kWh / day*

Malaga **Life**

86 × 86 × 35 in
1 reclining seat, 5 upright seats

Acrylic



Side cover



Neck massage

Deluxe Scandi Edition	
Net weight / Water volume	739 lbs / 317 gallons
Frame	Wellis PolyStyrol (WPS)
Cabinet	HorizontSide™ UV-proof wood textured
Reinforcement	Poli-MAX™
Scandinavian insulation	Polyfoam 1.4 in
Total number of jets	40 jets
Min / Opt. power requirement	22A / 35A - 240V/60Hz
Pumps	2 × 3 HP - single speed
Circulation pump	W-EC pump (0.25 kW)
W.O.W. system	–
Heater	4 kW
Control panel	Easy7
Auxiliary control panel	–
Water sanitization	Ozmix™ system (Ozone + mixer)
Cartridge filter	1 × MicroPlus antibacterial
Flat fountain jets	3 Lighted Fountain Jets
Waterfall	Lighted Waterfall
Light system	Well, Edge, and Corner Lighting
Thermo cover	standard - 4.7 to 3.5 in

Options
3 kW heat pump
Smart-In step prepared to house heat pump
MyMusic™ 2.0 with edge speakers

Plug & Play Option
SmartPhone app with wifi connection

* California Energy Commission data: water 102 °F, air 63 °F, filtering 1×2 hour. Based on TÜV measurements with heat pump.
** If the minimum current is connected, the massage motor(s) and the heating unit cannot be operated at the same time.



Prague Life

79 × 79 × 35 in
1 reclining seat, 5 upright seats

Acrylic



Sterling silver Tuscan sun Midnight canyon

Side cover



brown grey



Focus massage seat



↑ Deluxe edition with sound system

Deluxe Scandi Edition

Net weight / Water volume	498 lbs / 317 gallons
Frame	Wellis PolyStyrol (WPS)
Cabinet	HorizontSide™ UV-proof wood textured
Reinforcement	Poli-MAX™
Scandinavian insulation	Polyfoam 1.4 in
Total number of jets	50 jets
Min / Opt. power requirement	22A / 35A - 240V/60Hz
Pumps	2 × 3 HP - single speed
Circulation pump	W-EC Pump (0.25 kW)
W.O.W. system	–
Heater	4 kW
Control panel	Easy7
Auxiliary control panel	–
Water sanitization	Ozmix™ system (Ozone + mixer)
Cartridge filter	1 × MicroPlus antibacterial
Flat fountain jets	2 Lighted Fountain Jets
Waterfall	Lighted Waterfall
Light system	Well, Edge, and Corner Lighting
Thermo cover	standard - 4.7 to 3.5 in

Options

3 kW heat pump
Smart-In step prepared to house heat pump
MyMusic™ 2.0 with edge speakers

Plug & Play Option

SmartPhone app with wifi connection

* California Energy Commission data: water 102 °F, air 63 °F, filtering 1×2 hour. Based on TÜV measurements with heat pump.
** If the minimum current is connected, the massage motor(s) and the heating unit cannot be operated at the same time.



Manhattan Life

79 × 60 × 33 in
1 reclining seat, 2 upright seats

Acrylic



Sterling silver Tuscan sun

Side cover



brown grey



Body Flow massage seat



↑ Deluxe edition with sound system

Deluxe Scandi Edition

Net weight / Water volume	617 lbs / 148 gallons
Frame	Wellis PolyStyrol (WPS)
Cabinet	HorizontSide™ UV-proof wood textured
Reinforcement	Poli-MAX™
Scandinavian insulation	Polyfoam 1.4 in
Total number of jets	30 jets
Min / Opt. power requirement	22A / 35A - 240V/60Hz
Pumps	3 HP - single speed
Circulation pump	W-EC pump (0.25 kW)
W.O.W. system	–
Heater	4 kW
Control panel	Easy7
Auxiliary control panel	–
Water sanitization	Ozmix™ system (Ozone + mixer)
Cartridge filter	MicroPlus antibacterial
Flat fountain jets	2 Lighted Fountain Jets
Waterfall	–
Light system	Well, Edge, and Corner Lighting
Thermo cover	standard - 4.7 to 3.5 in

Options

3 kW heat pump
Smart-In step prepared to house heat pump
MyMusic™ 2.0 with edge speakers

Plug & Play Option

SmartPhone app with wifi connection

* California Energy Commission data: water 102 °F, air 63 °F, filtering 1×2 hour. Based on TÜV measurements with heat pump.
** If the minimum current is connected, the massage motor(s) and the heating unit cannot be operated at the same time.



energy consumption
2.8
kWh / day*

↑ Deluxe edition with sound system

Vienna Life

91 × 91 × 35 in
7 upright seats

Acrylic



Sterling silver Tuscan sun Midnight canyon

Side cover



brown grey



Wellis Dome

Deluxe Scandi Edition

Net weight / Water volume	848 lbs / 343 gallons
Frame	Wellis PolyStyrol (WPS)
Cabinet	HorizontSide™ UV-proof wood textured
Reinforcement	Poli-MAX™
Scandinavian insulation	Polyfoam 1.4 in
Total number of jets	62 jets
Min / Opt. power requirement	22A / 35A - 240V/60Hz
Pumps	2 × 3 HP - single speed
Circulation pump	W-EC pump (0.25 kW)
W.O.W. system	–
Heater	4 kW
Control panel	Easy7
Auxiliary control panel	–
Water sanitization	Ozmix™ system (Ozone + mixer)
Cartridge filter	3 Superfine
Flat fountain jets	2 Lighted Fountain Jets
Waterfall	1 Ligthing
Light system	Well and Edge Lighting
Thermo cover	standard - 4.7 to 3.5 in

Options

3 kW heat pump
Smart-In step prepared to house heat pump
MyMusic™ 2.0 with edge speakers

Plug & Play Option

SmartPhone app with wifi connection



energy consumption
2.8
kWh / day*

↑ Deluxe edition with sound system

Lugano Life

91 × 91 × 35 in
1 reclining seat, 5 upright seats

Acrylic



Sterling silver Tuscan sun Midnight canyon

Side cover



brown grey



Intenso massage seat

Deluxe Scandi Edition

Net weight / Water volume	853 lbs / 365 gallons
Frame	Wellis PolyStyrol (WPS)
Cabinet	HorizontSide™ UV-proof wood textured
Reinforcement	Poli-MAX™
Scandinavian insulation	Polyfoam 1.4 in
Total number of jets	52 jets
Min / Opt. power requirement	22A / 35A - 240V/60Hz
Pumps	2 × 3 HP - single speed
Circulation pump	W-EC pump (0.25 kW)
W.O.W. system	–
Heater	4 kW
Control panel	Easy7
Auxiliary control panel	–
Water sanitization	Ozmix™ system (Ozone + mixer)
Cartridge filter	3 Superfine
Flat fountain jets	2 Lighted Fountain Jets
Waterfall	–
Light system	Well and Edge Lighting
Thermo cover	standard - 4.7 to 3.5 in

Options

3 kW heat pump
Smart-In step prepared to house heat pump
MyMusic™ 2.0 with edge speakers

Plug & Play Option

SmartPhone app with wifi connection

* California Energy Commission data: water 102 °F, air 63 °F, filtering 1×2 hour. Based on TÜV measurements with heat pump.
** If the minimum current is connected, the massage motor(s) and the heating unit cannot be operated at the same time.

* California Energy Commission data: water 102 °F, air 63 °F, filtering 1×2 hour. Based on TÜV measurements with heat pump.
** If the minimum current is connected, the massage motor(s) and the heating unit cannot be operated at the same time.

Acrylic

Sterling silver

Side cover

grey



Milano P&P

85 × 75 × 34 in
"Plug & Play", 1 reclining seat, and 4 upright seats



Body Flow massage seat



Focus massage seat

Deluxe Scandi Edition	
Net weight / Water volume	618 lbs / 255 gallons
Frame	Wellis PolyStyrol (WPS)
Cabinet	HorizontSide™ UV-proof wood textured
Reinforcement	Poli-MAX™
Scandinavian insulation	Polyfoam 1.4 in
Total number of jets	36 jets
Power requirement	12A - 120V / 60Hz
Pumps	1 × 1.5 HP - double speed
Circulation pump	–
W.O.W. system	–
Heater	1 kW
Control panel	Easy 4
Auxiliary control panel	–
Water sanitization	Ozmix™ system (Ozone + mixer)
Cartridge filter	1 Superfine
Flat fountain jets	–
Waterfall	–
Light-zone system	Well Lighting
Thermo cover	standard - 4.7 to 3.5 in

Plug & Play Option
SmartPhone app with wifi connection

Acrylic

Sterling silver

Side cover

grey



Oslo P&P

79 × 59 × 31 in
"Plug & Play", 2 reclining seats, and 1 upright seat



2 Body Flow massage seats



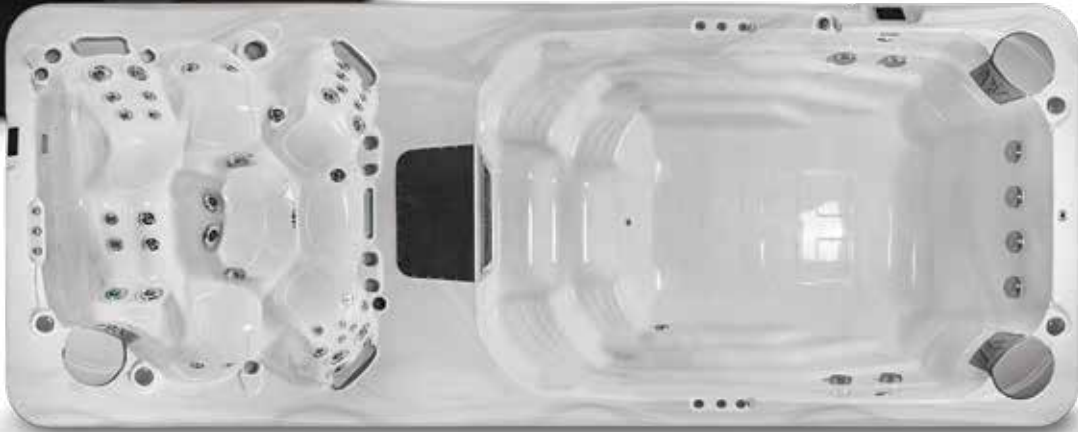
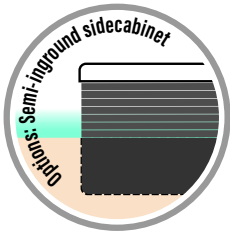
Foot massage

Deluxe Scandi Edition	
Net weight / Water volume	551 lbs / 200 gallons
Frame	Wellis Polystyrol (WPS)
Cabinet	HorizontSide™ UV-proof wood textured
Reinforcement	Poli-MAX™
Scandinavian insulation	Polyfoam 1.4 in
Total number of jets	30 jets
Power requirement	12A - 120V / 60Hz
Pumps	1 × 1.5 HP - double speed
Circulation pump	–
W.O.W. system	–
Heater	1 kW
Control panel	Easy 4
Auxiliary control panel	–
Water sanitization	Ozmix™ system (Ozone + mixer)
Cartridge filter	1 Superfine
Flat fountain jets	–
Waterfall	–
Light-zone system	Well Lighting
Thermo cover	standard - 4.7 to 3.5 in

Plug & Play Option
SmartPhone app with wifi connection



← Simple installation,
no need for a concrete base.



Rio Grande

19'8" x 7'8" x 4'9"
1 reclining seat, 4 upright seats

Acrylic



Sterling silver

Side cover



brown



grey



Net weight / Water volume	2 866 lbs / 1 744 gallons
Frame	Stainless steel
Cabinet	HorizontSide™ or semi-inground
Reinforcement	Fiberglass reinforced
Total number of jets	40
Min. / Opt. p. req.* (hot tub)	20A / 35A - 240V/60Hz
Min. / Opt. p. req.* (swim spa)	35A / 48A - 240V/60Hz
Pumps (hot tub)	2 x 3 HP - single speed + circ. pump (0.25kW)
Pumps (swim spa)	3 x 3 HP - double speed + circ. pump (1.1kW)
Heater	4 kW
Control panel	2 x SmartTouch
Auxiliary control panel	-
Water sanitization	Ozmix™ System
Cartridge filter	2 Superfine
Laminar fountain jets	3 x 6 Lighted Fountain Jets
Waterfall	Lighted Waterfall
Led lights	2 x 16 exclusive LEDs + illuminated controls
Sound system	AquaSoul™ Pro 4.1
Aromatic therapy	Liquid Aroma (without fragrance)
SmartPhone app - wifi connection	standard
Scandinavian insulation	standard
Heat exchanger preparation	standard
Swimming stick	standard

Options

- 3 kW heat pump
- Rowing equipment
- Semi-inground cabinet

* If the minimum current is connected, the massage motor(s) and the heating unit cannot be operated at the same time.



Amazon Life

18' x 7'6" x 4.9"
2 upright seats in swim area

Acrylic



Sterling silver

Side cover



brown

grey



Net weight / Water volume	2 756 lbs / 2 113 gallons
Frame	Stainless steel
Cabinet	HorizontSide™ or semi-inground
Reinforcement	Fiberglass reinforced
Total number of jets	27
Min. / Opt. power requirement*	35A / 60A - 240V/60Hz
Pumps (hot tub)	1 x 3 HP - single speed + circ. pump (1.1kW)
Pumps (swim spa)	3 x 3 HP - double speed
Heater	4 kW
Control panel	SmartTouch
Auxiliary control panel	-
Water sanitization	Ozmix™ System
Cartridge filter	4 Superfine
Laminar fountain jets	2 x 3 Lighted Fountain Jets
Waterfall	-
Led lights	25 x exclusive LEDs + illuminated controls
Sound system	AquaSoul™ Pro 4.1
Aromatic therapy	-
SmartPhone app - wifi connection	standard
Scandinavian insulation	standard
Heat exchanger preparation	standard
Swimming stick	standard

Options

3 kW heat pump
Rowing equipment
Semi-inground cabinet

* If the minimum current is connected, the massage motor(s) and the heating unit cannot be operated at the same time.



Danube Life

14'9" x 7'8" x 4'9"
2 upright seats in swim area

Acrylic



Sterling silver

Side cover



brown

grey



Net weight / Water volume	2 308 lbs / 1 562 gallons
Frame	Stainless steel
Cabinet	HorizontSide™ or semi-inground
Reinforcement	Fiberglass reinforced
Total number of jets	24
Min. / Opt. power requirement*	35A / 60A - 240V/60Hz
Pumps (hot tub)	1 x 3 HP - single speed + circ. pump (1.1kW)
Pumps (swim spa)	3 x 3 HP - double speed
Heater	4 kW
Control panel	SmartTouch
Auxiliary control panel	-
Water sanitization	Ozmix™ System
Cartridge filter	2 Superfine
Laminar fountain jets	2 x 3 Lighted Fountain Jets
Waterfall	-
Led lights	18 x exclusive LEDs + illuminated controls
Sound system	AquaSoul™ Pro 4.1
Aromatic therapy	-
SmartPhone app - wifi connection	standard
Scandinavian insulation	standard
Heat exchanger preparation	standard
Swimming stick	standard

Options

3 kW heat pump
Rowing equipment
Semi-inground cabinet

* If the minimum current is connected, the massage motor(s) and the heating unit cannot be operated at the same time.



SpaGrip spa mounted

This powder-coated, rust-free handrail, partially covered with anti-slip foam, can be mounted on the side panel of any spa. It ensures a comfortable and safe way to get in and out of the spa.



SpaGrip floor standing

The floor-standing version of SpaGrip can be clamped under the spa and attached to the side cover. It guarantees a convenient and secure way of entering and exiting the spa, while can be replaced when not needed.



TowelBar

Crafted from sleek, black powder-coated aluminum, TowelBar holds your towels just a short distance away from splashing water. When not in use, it conveniently folds flat against your spa. With quick and easy installation, it is compatible with almost any spa model.



Spaziano tray

With its sturdy construction and 360° rotation, Spaziano tray offers a versatile and hassle-free way to store snacks, drinks, reading materials, and other essentials while enjoying your spa experience.



WelliStep

The hassle-free spa step that requires no maintenance, featuring a UV resistant plastic construction, a weight capacity of 120 kg, anti-slip rubber treads, and dimensions of 707×621×425 mm.



Swim spa stairs

Dimension with rail: 147×165×93.5 cm
Dimension without rail: 147×77×88 cm



Smart-In Step

Smart-In Step with heat pump storage compartment. In Peaklife spa models, additional functions are available, such as a USB socket and LED lighting that can be integrated into the Exclusive Lights colour therapy.



Heat pump

You can significantly reduce your spa's heating costs thanks to the latest coolant and high-quality compressor. The reinforced fan reduces the noise level and vibration of the device.



WIS - Wellis intelligent system

The WIS smart water analyser provides a thorough analysis of spa water, measuring quality, temperature, and conductivity. Compatible with all spa types, the mobilephone app enables real-time monitoring of water conditions for immediate updates.



Automatic water hardness or PH value meter

With this equipment, you can constantly check the water hardness and PH level of your spa-water and ensure the correct chemical composition.



Spa booster pillow

This comfortable pillow fits any spa; it can be fixed and adjusted to the water level. Sturdy, heat resistant material, easy to fill, standard pipe fitting, suction cup for non-slip feature.



Floating chemical dispenser

It ensures a steady flow of chemicals. The chemical in the dispenser does not come into contact with the hot tub shell, therefore there is no damage or discoloration. Multi-stage, adjustable chemical dispensing.



Filter cleaning device

The purpose of the Wellis filter cleaning device is to clean your spa filter in a flash.



Spa wand

With the hand-held Spa wand vacuum spa cleaner, you may collect impurities from the bottom of the spa, the steps or the surface of water – without having to drain the water. It is delivered with special heads.



Manual filter cartridge cleaner

The filters can be cleaned simply and quickly with the manual filter cartridge cleaner. Eight lamellas can be cleaned at the same time without splashing; it can be connected to the garden hose.



Spa-cleaning glove

This glove uses microfibre technology to lift dust and dirt from surfaces with a soft touch, preventing scratches and tarnishing.



Spa cover wipes

Spa cover cleaning wipes are designed to clean your spa or hot tub cover removing dirt and stains without the need of additional cleaning agents.



Spa cleaning disc

Eliminates water-surface oils & reduces scum line formation. Absorbs scum, oily residue including body oils, suntan lotion. Improves filter performance.



Easy cover lifter

With the use of the Easy cover lifter, one person can easily remove the thermo cover. It fits all spa sizes. Durable, powder-sprayed surface. Non-slip handle.



Universal cover lifter

Removing the cover is easier than ever with the universal cover lifter. In order to ensure proper operation, there must be a space of at least 60 cm between the side of the spa and the wall. Can be used with Xtreme™ thermo cover as well!



FROG @ease floating sanitizing system

How many times have you thought, "this hot tub is just too much work!" We set out to change that with FROG @ease. Up to 75%* less chlorine. Easy on hot tub surfaces with less odors. Single color match for easy reading. No constant monitoring. No mixing chemicals.



FROG @ease floating smartchlor cartridge 3 pack

FROG @ease combines our sanitizing minerals with SmartChlor® Technology to kill bacteria 2 ways. Shock only once a month. Self regulates for continuous crystal clear water. Easy on hot tub surfaces with less odors.



FROG maintain hero 12 pack

Hot tub shocking is easier with FROG® Maintain™ non-chlorine shock. Ongoing maintenance shock. One dose delivers clean crystal-clear water. Maintain the clean, without the chlorine or Cyanuric Acid.



FROG @ease test strips (30 bottle)

Quick and easy – just dip, shake and get an accurate reading in 2 seconds. A simple Go/No Go out indicator for SmartChlor makes testing fast and easy. Also tests for pH, Total Alkalinity and Hardness.



Active charcoal filter for spas

When your spa is filled through an active charcoal pre-filter, you get crystal clear bathwater. Sufficient for pre-filtering 8,000 l water.



Water softener for spas

If your spa is filled with demineralized water using this resin-filled pre-filter, it will prevent lime-stone buildup on mechanical devices, thus increasing their service life.



Antibacterial filter cartridges

Paper filters with an antibacterial coating, whose fibers with an increased surface area are capable of multiplying the performance of a traditional filter cartridges.



Aroma liquid for spas

Liquid aroma for spas 250 ml. ucalyptus, lavender, mediterranean, orange bloom, rosemary.



Thermal cover

The purpose of using the thermo cover is to maintain the set temperature of the spa water. Thermal insulation is achieved through a special foam layer, which is covered with a UV-resistant artificial leather cover on the outside. The thermo cover is 12 cm thick in the middle and slopes towards the edges of the spa (7 cm), allowing rainwater to easily drain off.



Wellis®

The products included in the catalogue are for illustration purposes only, and may not always match the specifications of the advertised product.
Wellis reserves the right to modify the products – including the product range – without prior notice, since they are valid at the time they are delivered to the printing press.
We may not be made responsible for printing errors.

MAR1247

wellisspa.com